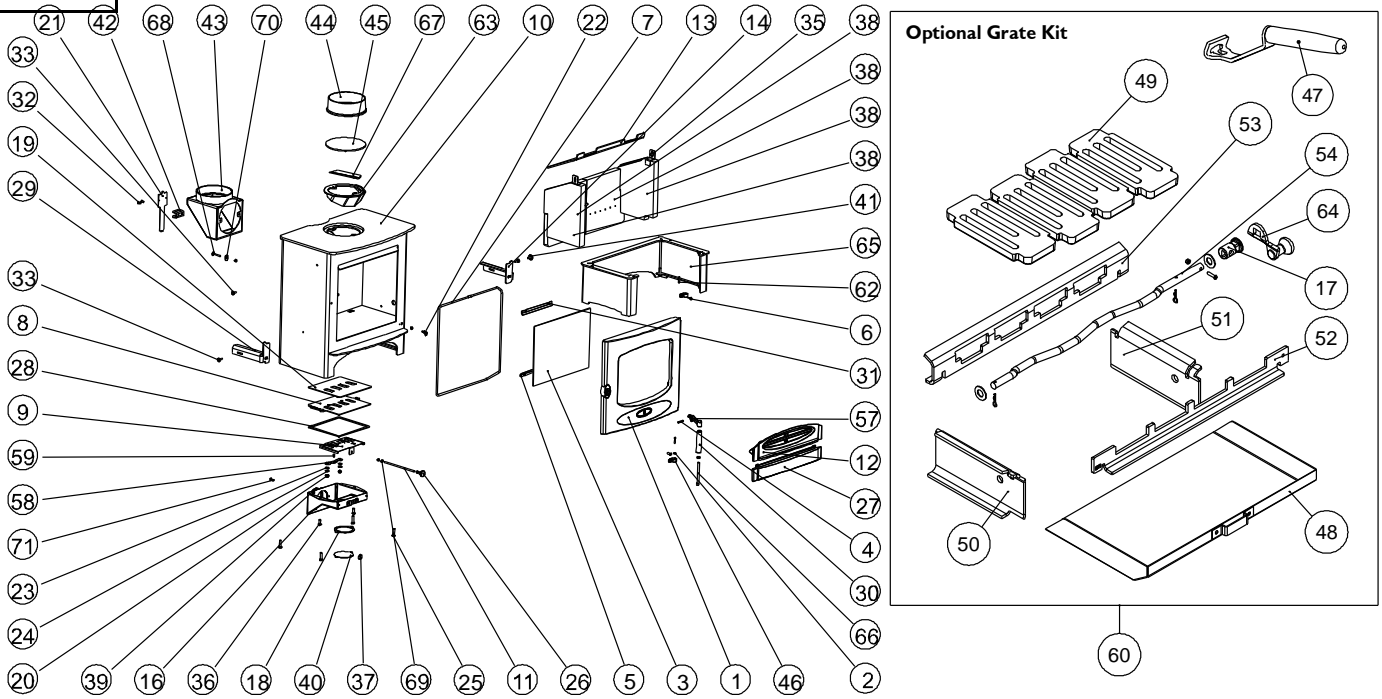




Issue D



Item	Part No.	Description	Ex.Vat.	Inc.Vat.	Item	Part No.	Description	Ex.Vat.	Inc.Vat.
10	001/ER010	Firebox			66	008/FFB007	M8 x 100 Allen Hd Bolt	0.50	0.60
57#	002/BR012	Handle Arm	14.25	17.10	69	008/FFN004	M6 Nut	0.10	0.12
46	002/BR020	Hinge Casting	7.95	9.54	20	008/FFN015	M8 Philips Nut	0.50	0.60
44	002/CH12B	Cast Flue Collar	47.75	57.30	31	008/FFS003	M5 x 8mm Philips Pan Hd	0.20	0.24
17	002/DY21	Riddler Knob	14.70	17.64	6	008/FFS018	M6x12 Countersunk Socket Head Scre	0.30	0.36
1#	002/ER001/A	Door Assembly	153.00	183.60	32	008/FFS025	M6 x 12 Philips Pan Head Screw	0.30	0.36
12	002/ER017	Fuel Retainer	34.00	40.80	71	008/FFS045	M6x16 Hex Headed Screw	0.30	0.36
27	002/ER034	Wood Ash Retainer	29.50	35.40	25	008/FFS050	M8 Bolt x 30mm Long	0.30	0.36
49	002/EY03	Grate Plate	22.00	26.40	36	008/FFS059	M8 x 20 Hex Hd Bolt	0.30	0.36
22	002/PV13	Door Latch	5.95	7.14	73	008/FFS078	4.2 x 9.5 Pozzi Pan Head S/T Screw	0.30	0.36
4	004/BR014	Handle Pivot Pin	3.55	4.26	24	008/FFW002	Washer 14 x 6	0.10	0.12
58	004/BR015	Clicker Retainer Plate	2.34	2.81	72	008/FFW015	Thackery Washer	1.40	1.68
5	004/BW23	Glass Retainer	2.70	3.24	23	008/FFW025	M8 Wavy Washer	0.10	0.12
8	004/CR005	Air Control Plate Assembly	12.70	15.24	2	008/FFW026	M6 Heavy Brass Washer	0.15	0.18
40	004/CR064	Duct Coverplate	6.60	7.92	56*	008/FFW29	Door Seal Adhesive	7.35	8.82
41	004/DY22	Riddler Hole Plug	3.10	3.72	67	010/AY51	Clamping Plate	12.85	15.42
9	004/ER007	Air Inlet Slide	8.75	10.50	61*	010/BW51	Ash Carrier	71.00	85.20
11	004/ER016	Control Rod	1.37	1.64	63	010/CR070	Flue Collar Deflector Assy	43.45	52.14
48	004/ER033	Ashpan	29.00	34.80	60	010/ER022	Grate Kit (Inc Handle)	167.50	201.00
35	004/XV30	Brick Bracket	4.95	5.94	29	010/ER028	L H Sideplate	12.10	14.52
3	006/ER019	Glass	51.00	61.20	14	010/ER029	R.H. Sideplate	12.10	14.52
26	008/AY37	Air Control Knob	3.30	3.96	13	010/ER031	Baffle	33.80	40.56
30	008/BR013	Wooden Door Handle	8.90	10.68	70	010/ER036	Brick Retaining Washer	1.20	1.44
28	008/BR045	Airbox Gasket	7.10	8.52	51	010/ER042	R.H.Grate Support	18.20	21.84
37	008/BR052	Felt Washer	0.76	0.91	50	010/ER043	L.H. Grate Support	18.20	21.84
62	008/BW39/S	Hinge Pin Set 5mm x 25mm	2.49	2.99	65#	010/ER050	Store Stand	95.00	114.00
19	008/CR006	Air Box Gasket(Upper)	7.10	8.52	74*	010/ER057	Heat Shield (Optional Extra)	56.50	67.80
39	008/CR048	Flanged Spigot 80mm	7.90	9.48	54	010/ER060	Riddler Rod Assy	22.50	27.00
18	008/CR063	Duct Gasket	3.30	3.96	53	010/ER061	Rear Grate Support	18.20	21.84
64	008/DY27	Riddling Tool	9.65	11.58	52	010/ER065	Front Grate Support	18.20	21.84
7	008/ER003	Door Seal	19.20	23.04	43#	010/TW33	Vertical Rear Flue Adapter	72.50	87.00
55*	008/ER044	Glass Seal	15.00	18.00	38	011/ER030/S	Set of Firebricks	57.20	68.64
59	008/ES36/01	Brass Ball Catch	3.05	3.66	47	012/BV20/A	Ashpan Tool	17.60	21.12
33	008/FFB003	Coach Bolt M6 x 20	0.40	0.48	21	012/ER011	Serial No. Label		
68	008/FFB004	Coach Bolt M6 x 30	0.50	0.60	45	012/TW09	Blanking Plate	16.25	19.50

* These items are not shown on the drawing.

Please specify colour when ordering.

Prices are shown in pounds sterling with vat at 20%

They are correct at the date shown but may be subject to change without notice. E. & O.E

These prices are subject to a carriage charge.

To obtain spare parts please contact your local stockist giving Model, Part No. and Description. In case of difficulty contact the manufacturer at the address shown.

This drawing is for identification purposes only.

